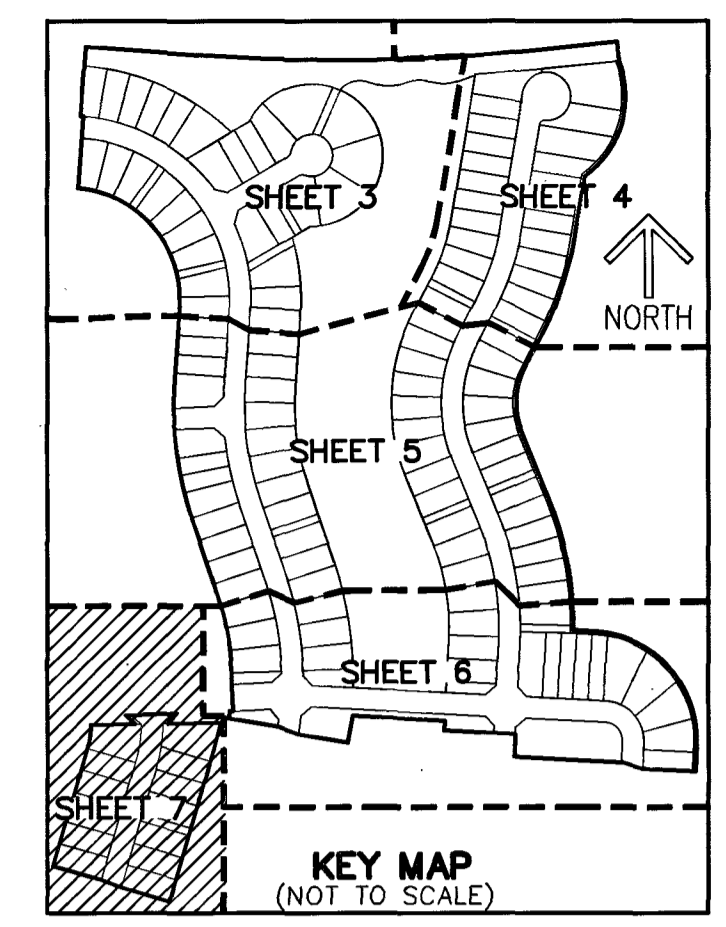


CRESSWIND PALM BEACH PHASE 4

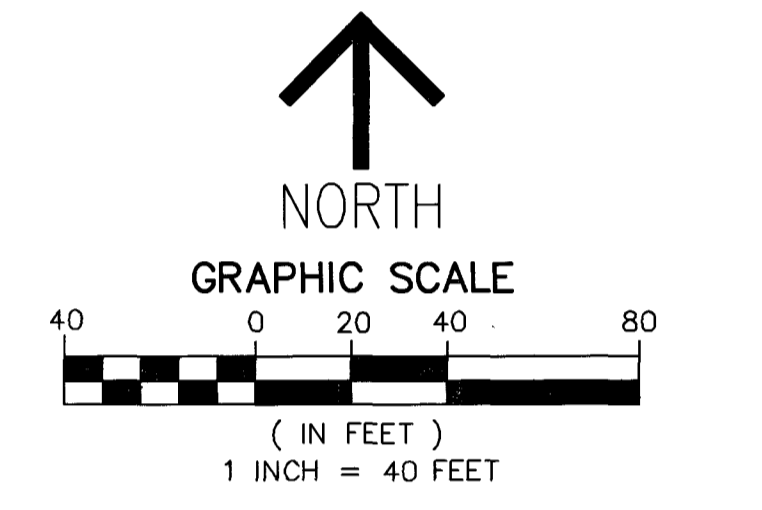
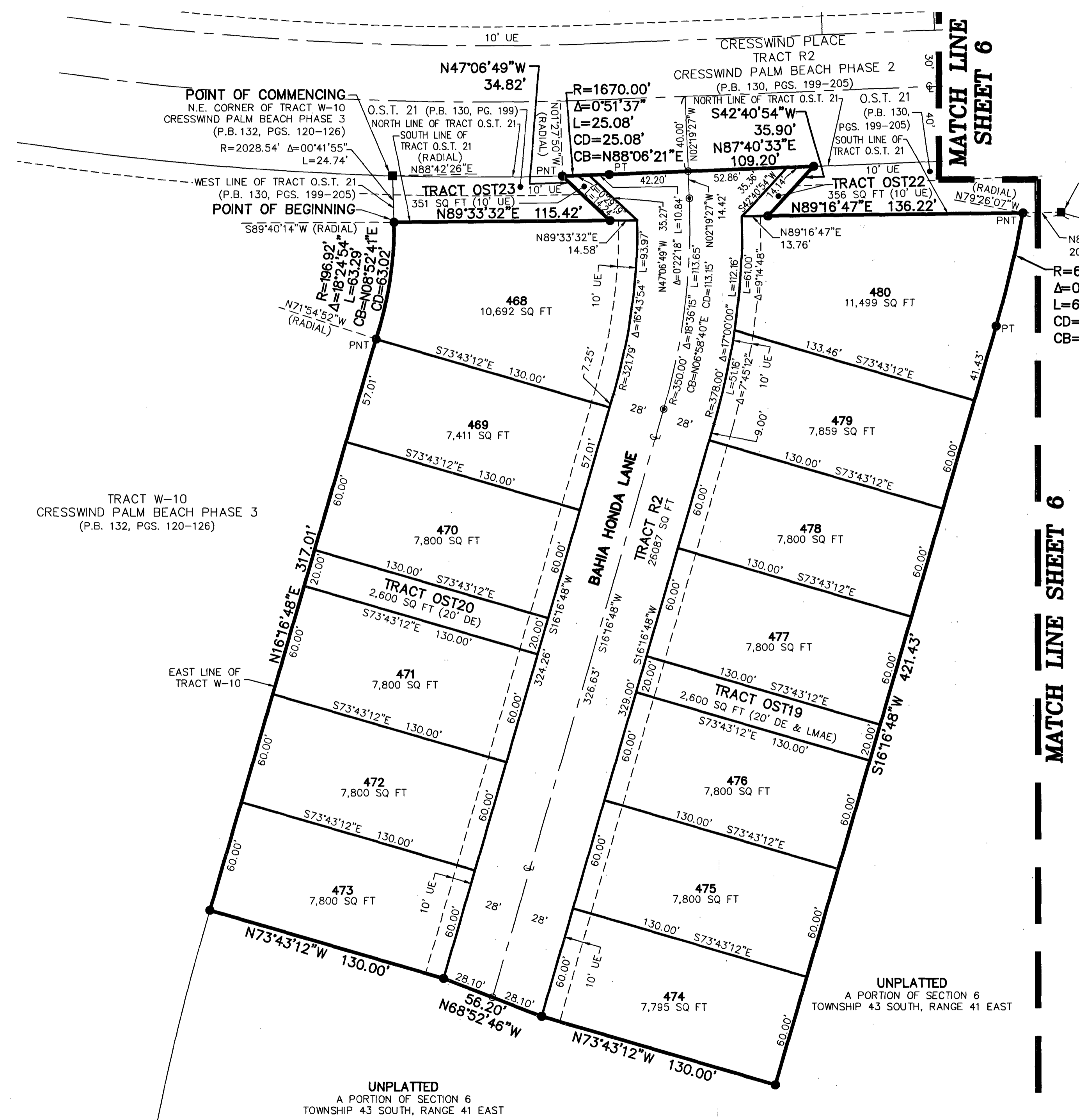
BEING A REPLAT OF PORTION OF TRACT O.S.T. 21,
CRESSWIND PALM BEACH PHASE 2, AS RECORDED IN PLAT BOOK 130, PAGES 199 THROUGH 205,
OF THE PUBLIC RECORDS OF PALM BEACH COUNTY, FLORIDA,
TOGETHER WITH A PORTION OF SECTION 6, TOWNSHIP 43 SOUTH, RANGE 41 EAST,
CITY OF WESTLAKE, PALM BEACH COUNTY, FLORIDA.

THIS INSTRUMENT PREPARED BY
DAVID P. LINDLEY
OF
CAULFIELD & WHEELER, INC.
SURVEYORS - ENGINEERS - PLANNERS
7900 GLADES ROAD, SUITE 100
BOCA RATON, FLORIDA 33434 - (561)392-1991
CERTIFICATE OF AUTHORIZATION NO. LB3591



85

SHEET 7 OF 7



S.E. CORNER OF SECTION 6-43-41
FOUND PALM BEACH COUNTY
CONCRETE MONUMENT
N 879188.5341
E 891221.5519

NOTES
COORDINATES, BEARINGS AND DISTANCES
COORDINATES SHOWN ARE GRID
DATUM = NAD 83 (2007 ADJUSTMENT)
ZONE = FLORIDA EAST
LINEAR UNIT = US SURVEY FEET
COORDINATE SYSTEM 1983 STATE PLANE
TRANSVERSE MERCATOR PROJECTION
ALL DISTANCES ARE GROUND
SCALE FACTOR = 1.0000017
GROUND DISTANCE X SCALE FACTOR = GRID DISTANCE
BEARINGS AS SHOWN HEREON ARE GRID DATUM,
NAD 83 (2007 ADJUSTMENT), FLORIDA EAST ZONE.

LEGEND/ABBREVIATIONS
C - CENTERLINE
Δ - DELTA (CENTRAL ANGLE)
CB - CHORD BEARING
CD - CHORD DISTANCE
DE - DRAINAGE EASEMENT
E - EASTING (WHEN USED WITH COORDINATES)
L - ARC LENGTH
LMAE - LAKE MAINTENANCE ACCESS EASEMENT
LAE - LIMITED ACCESS EASEMENT
LB - LICENSED BUSINESS
N - NORTHING (WHEN USED WITH COORDINATES)
(R) - RADIAL LINE
O.S.T./OST - OPEN SPACE TRACT
PC - POINT OF CURVATURE
PT - POINT OF TANGENCY
PNT - POINT OF NON-TANGENCY
PRC - POINT OF REVERSE CURVATURE
R - RADIUS
RPE - RURAL PARKWAY EASEMENT
UE - UTILITY EASEMENT
PED - PEDESTRIAN ACCESS EASEMENT
● - SET PERMANENT CONTROL POINT
NAIL AND DISK STAMPED "C&W PRM LB3591"
● - SET PERMANENT REFERENCE MONUMENT
SET 5/8" IRON ROD WITH CAP
STAMPED "C&W PRM LB3591"
■ - FOUND PERMANENT REFERENCE MONUMENT
4" x 4" x 24" CONCRETE MONUMENT WITH
DISK STAMPED "PRM LB3591"